

# UPEC UE-MILP001 Series

## Data Sheet

### Table of Contents

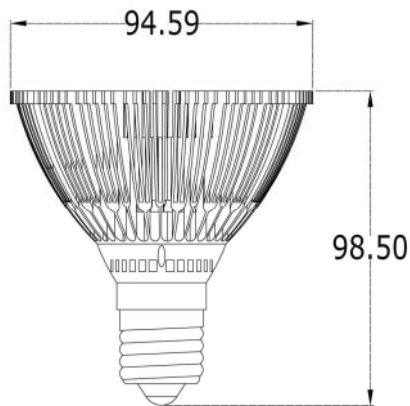
Features.....	2
Dimensions.....	2
General Specification .....	3
Specifications of Different Colors .....	3
Candle Power Distribution Curve.....	4
Dimensions of Individual Packing Materials .....	5
Dimensions of Carton.....	5
Limited Warranty.....	5
Traceability .....	5



## Features

- High Brightness LED: Reduce the driver voltage and enhance the lighting efficiency
- Extremely low operation cost
- Energy saving: save 70~75% energy (comparing with traditional halogen lamp)
- Save time and cost for maintaining
- Environmental Friendly
- CE and RoHS compliance
- No UV/IR

## Dimensions



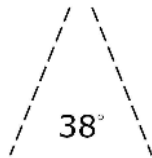
### Notes:

1. Drawings not to scale.
2. All dimensions are in millimeters.
3. Tolerance is  $\pm 1$  mm unless otherwise noted.
4. Protruded resin under flange is 1.0 mm max.
5. Specifications are subject to change without notice.
6. Each type has three different beam-angle versions (shown below)

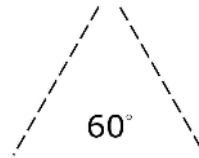
Beam angle of 25°



Beam angle of 38°



Beam angle of 60°



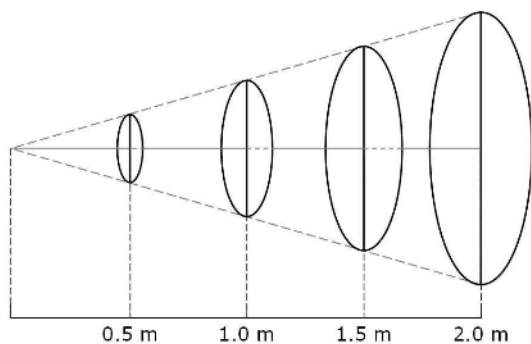
**General Specification**

Main material	Aluminum housing
Power Consumption	7 × 1W
Socket Type	E27
Input voltage	AC 110V or AC 220V
Operating Temp. Range	-30~50°C
Storage Temp. Range	-30~65°C
Weight	345~350 g
Warranty	2 Years (lifespan of is 20,000 hrs)

**Specifications of Different Colors**

Spec. Item	MILP001SW	MILP001SC	MILP001SR	MILP001SG	MILP001SB
Color	Warm White	Cool White	Red	Green	Blue
Color Temp. or Wavelength	3200K	6300K	620~630 nm	520~530 nm	460~470 nm
Luminous Flux	392 ± 10% lm	504 ± 10% lm	280 ± 10% lm	504 ± 10% lm	123 ± 10% lm
Illuminance @ 0.5 m (with 25° lens) <sup>[*]</sup>					
Illuminance @ 1.0 m (with 25° lens)					
Illuminance @ 1.5 m (with 25° lens)					
Illuminance @ 2.0 m (with 25° lens)					

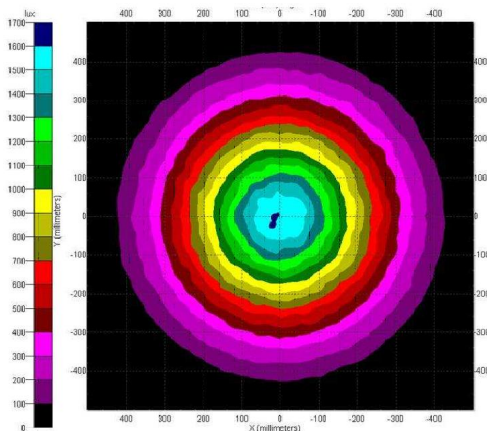
Following diagram is to be discussed



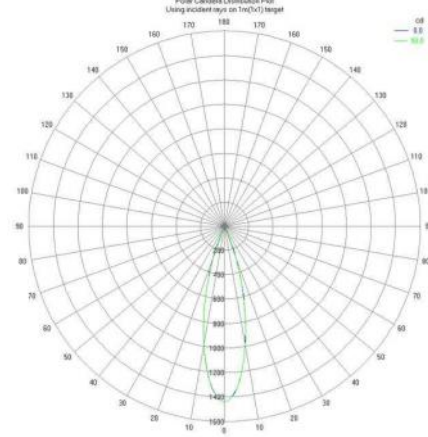
## Candle Power Distribution Curve

With lens of 25° (beam angle)

Illuminance Map

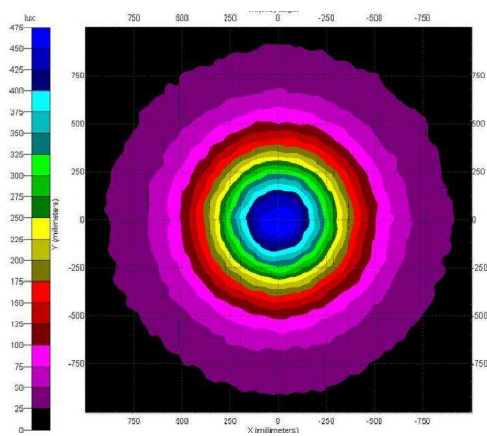


Candle Power Distribution Curve

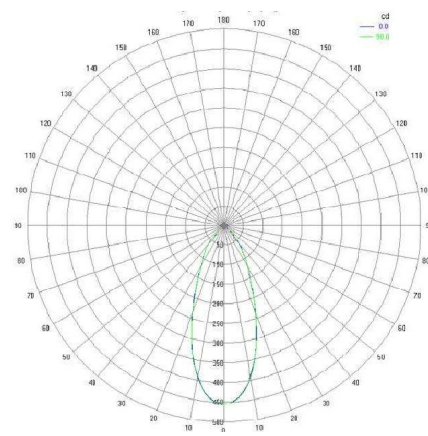


With lens of 38° (beam angle)

Illuminance Map

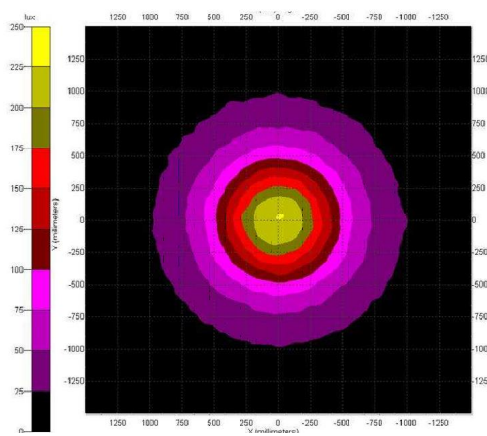


Candle Power Distribution Curve

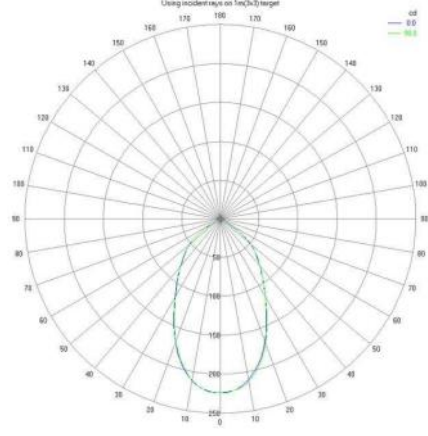


With lens of 60° (beam angle)

Illuminance Map



Candle Power Distribution Curve

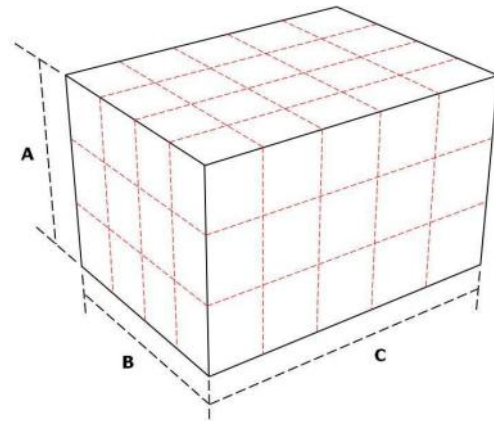
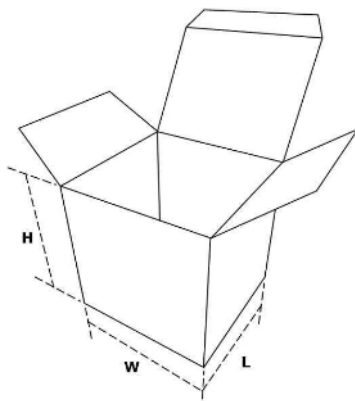


## **Dimensions of Individual Packing Materials**

1. Product quantity per packing: 1
2. Wide (W):  $100 \pm 2$  mm
3. Length (L):  $100 \pm 2$  mm
4. Height (H):  $112 \pm 2$  mm
5. Drawings not to scale

## **Dimensions of Carton**

1. Product quantity per packing: 60
2. Height (A):  $340 \pm 2$  mm
3. Length (B):  $405 \pm 2$  mm
4. Wide (C):  $505 \pm 2$  mm
5. Drawings not to scale



## **Limited Warranty**

UPEC's warranty obligations are limited to the terms set forth below: UPEC Electronics Corp. ("UPEC") warrants this hardware product against defects in materials and workmanship for a period of TWO (2) YEARS from the date of original agent or distributor purchase. If a defect exists, at its option UPEC will

1. repair the product at no charge, using new or refurbished replacement parts,
2. exchange the product with a product that is new or which has been manufactured from new or serviceable used parts and is at least functionally equivalent to the original product.

A replacement product/part assumes the remaining warranty of the original product. When a product or part is exchanged, any replacement item becomes your property and the replaced item becomes UPEC's property.

## **Traceability**

UPEC uses the International Organization for Standardization (ISO) definition of traceability (that appears in ISO 9001/2002): "Traceability is the ability to trace the history, application or location of that which is under consideration".

Traceability is the ability to accurately record and report on what ingredients, processes, machines, operators, recipes etc. were used in the production of consumer goods.

Each UPEC's MIL Series product has a unique serial number which has the quality records behind. This number is shown with the bar code on the label which could be found on the products. And UPEC follows the serial number for limited warranty compliance.

